

AG-M108 - 410 Wp

High performance module with „halfcut“ cells

108 cells

M10

Electrical Specification (STC)

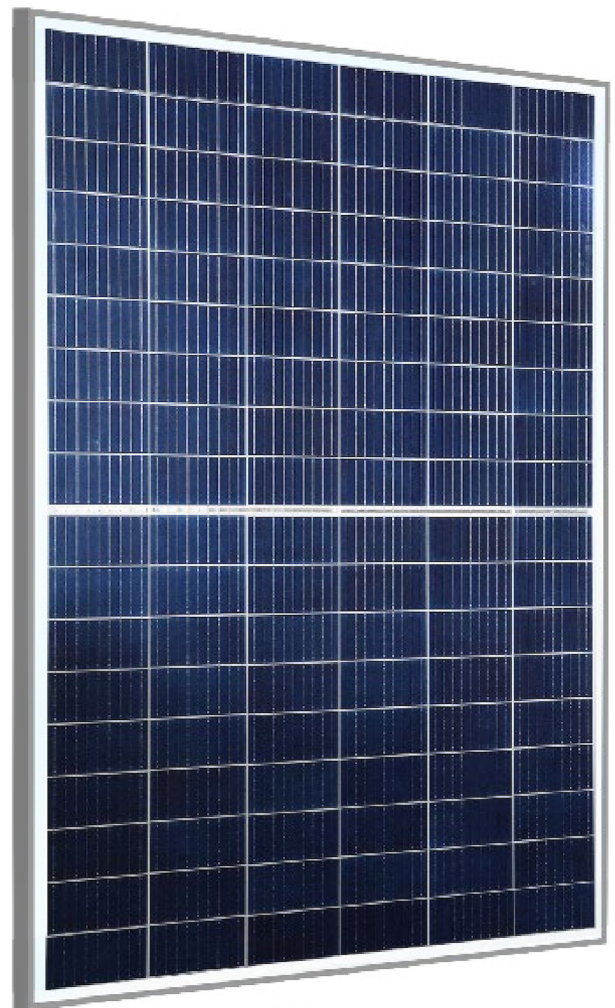
Maximum Power at (Pmax)	410 Wp
Optimum Operating Voltage (Vmp)	31.4 V
Optimum Operating Current (Imp)	13.06 A
Open Circuit Voltage (Voc)	37.4 V
Short Circuit Current (Isc)	13.81 A
Module Efficiency	21 %
Maximum System Voltage	1500 V DC (IEC)
Operating Module Temperature	-40 °C to +85 °C
Maximum Series Fuse Rating	25 A
Power Tolerance	0/+5 W

Temperature Specification

Nominal Operating Cell Temperature (NOCT)	43±2°C
Temperature Coefficient of Pmax	-0.36 %/°C
Temperature Coefficient of Voc	-0.29 %/°C
Temperature Coefficient of Isc	0.049 %/°C

Mechanical Specification

Solar Cell	M10: 182 x 91 mm monocrystalline
No. of Cells	halfcut 108 (6 x 18)
Dimensions Size 1	1722 x 1134 x 30 mm (with frame)
Weight Size 1	21.8 kg
Front Cover	3.2 mm low-iron tempered glass
Junction Box	IP68 rated (three bypass diodes)
Output Cables	4.0 mm ² , symmetrical lengths (400 mm)
Connectors	MC4 compatible
Fire Safety Class	Class C



1722 x 1134 x 30 mm
± 2 mm

Packing Configuration 40' HC Container

Pieces per pallet / Container	32 / 832
-------------------------------	----------

OEM production in China